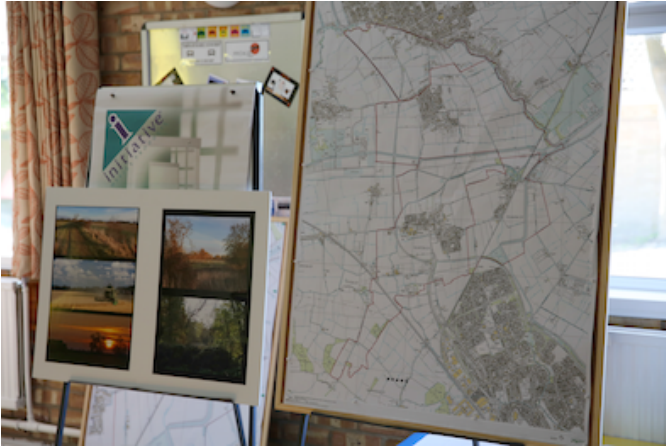


The Launch Bank Holiday weekend August/Sept 2013

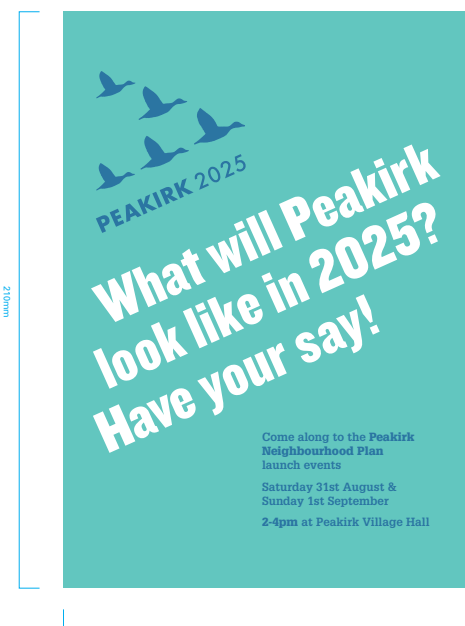




Boards, Flyers and Consultation Postcards

FRONT

BACK



Name:

Address:

Email:

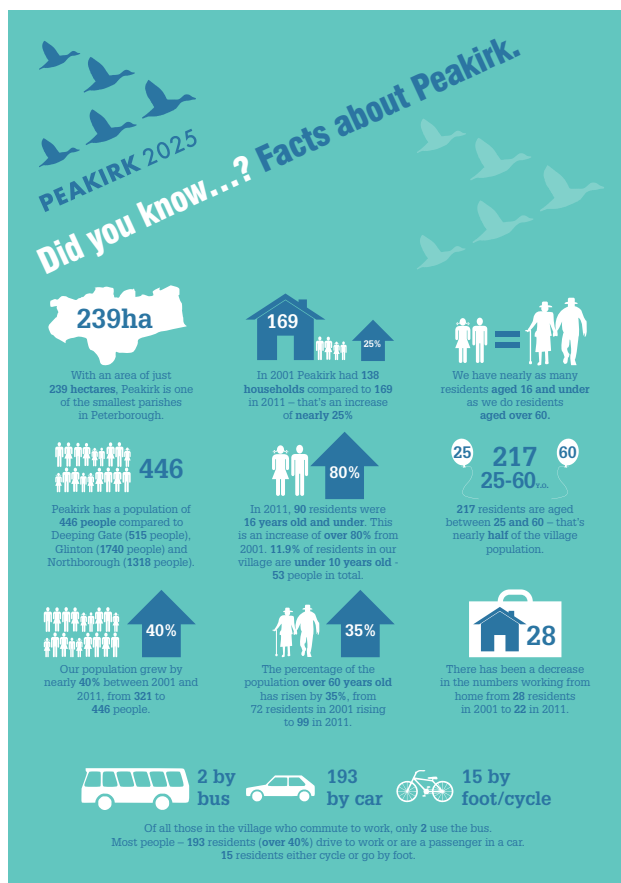
If I could **change one thing in the village** it would be:

If I could **keep one thing in the village the same** it would be:

Any other comments:

Post your completed postcard in the post-box either in the **Village Hall** or the **Church Porch**, or at **33 St Pegas Road, Peakirk**. You can also email us at peakirk2025@gmail.com

The data you provide here is being collected and securely stored by the Peakirk Neighbourhood Planning Team. Your personal information will be used solely for the purposes of communicating with you about the project. Your responses to this feedback form will be collected to ensure your identity is protected. The collated results will be reviewed by the Peakirk Neighbourhood Planning Team and used to help inform the Peakirk Neighbourhood Plan.



PEAKIRK 2025

What difference will a Neighbourhood Plan make?

How can I influence its outcomes?
Get involved! Give us your feedback now and throughout the process. There will be lots of opportunities for you to have your say, and we want to hear from you. You can contribute on one issue or the whole thing, whether that's in person, on paper, or online.

- Planning applications made in our parish will have to be assessed against the Peakirk Neighbourhood Plan
- Peterborough City Council will have to consider the planning policies within our Neighbourhood Plan and turn down any application that doesn't meet the criteria, unless there are extraordinary reasons for allowing it
- Some villages have other documents such as Village Design Statements, Parish Plans, Community Plans. These are helpful in guiding decisions made by the Peterborough City Council, but none of them have statutory status as Peakirk Neighbourhood Plan will
- Peakirk is the first Parish Council in Peterborough to use these powers
- We are also working with Glington, Northborough and possibly Deeping Gate to look at the important spaces between our villages

We are always looking for more people to join the Peakirk Neighbourhood Planning Team.
At the moment there are 10 of us on the team, but we would welcome new members who want to be actively involved in creating Peakirk's Neighbourhood Plan.

Will it ever happen?

Yes! We're confident that it will.
We have a tight programme to follow, but working with Peakirk Parish Council and with the continued enthusiasm of all those involved in the village, we hope to have the plan adopted by Peterborough City Council before the end of 2014.

We hope you'll help us make this happen!

How can I give you feedback or share my ideas?
Email us on peakirk2025@gmail.com
Tweet us [@PegaPuddleduck](https://twitter.com/PegaPuddleduck)

Fill out a postcard, and drop it into the postboxes in the **Village Hall**, the **Church Porch**, or **33 St Pegasus Road, Peakirk**

Speak to one of the **Peakirk Neighbourhood Planning Team** in person!

PEAKIRK 2025

Peakirk's Neighbourhood Plan

Neighbourhood Planning

The Localism Act was passed in 2011, and introduced a new way of planning for future development called Neighbourhood Planning. The idea is that decision-making is passed from a national and regional level to local government, and from local government to local communities.

Under this new government legislation, for the first time Peakirk Parish Council now has a chance of an influential say in our future as a village. Peakirk's Neighbourhood Plan will be a community-led, statutory framework to guide future development and growth in the village.

Peakirk, one of the smallest villages in Peterborough, is at the forefront of neighbourhood planning in this area. We are leading the way in terms of real community power. Other villages will look at us and recognise a community determined to guide its own future.

Our neighbourhood plan will be about the use and development of land in the Parish of Peakirk and will contain a vision, aims and planning policies. It could also contain suggested improvements to village facilities and services with an allocation of key sites for specific kinds of development.

It could deal with a wide range of social, economic and environmental issues (such as housing, employment, heritage and transport, green spaces, renewable energy, cemetery provision).

What's the process?

```

graph TD
    A[We get your views on what you'd like Peakirk to look like in 2025] --> B[We then draw up a draft plan that reflects your views]
    B --> C[We consult with you again to get feedback on the draft plan]
    C --> D[We make changes to the plan if appropriate, and submit to Peterborough City Council]
    D --> E[Peterborough City Council checks the draft plan, and publicises it for six weeks]
    E --> F[An independent examiner checks the legality of the draft plan and Peterborough City Council organises a referendum]
    F --> G[Peakirk residents vote on the referendum - the question will be 'Do you want Peterborough City Council to use the Neighbourhood Plan for Peakirk to help it decide planning applications in the Neighbourhood Area?']
    G --> H[If 50% or more of those who vote say 'Yes' then the plan will be adopted by Peterborough City Council, and will become a material consideration for all future planning applications in Peakirk]
    H --> A
  
```


Many residents came to hear what we proposed.



Post it comments from the Launch consultation.

Would Like	Do Like
Wildlife refuge	Bonfire night
Youth club	Peaceful
More equipment in park	Friendly
Adventure playground	Open space
Train station	Village green
Cycle path to Northboro	The people
Ducks	Characteristic village
Pub	My children are safe
Stream to paddle in	Everybody knows everybody
Youth club	Games day and fete
Shop	Our village grandmas!
Take-away	Open space
Faster broadband	Quiet
Reopen wildfowl centre	Brunch, The Park, free cakes
Pond with ducks/boats	Xmas parties
Upgrade pumping station	Small contained village
Dirt track	Quiet and friendly
Post office	Great village hall committee
Better equipment in park	Peace and quiet
Community shop in pub	Rural
Post office in pub	The pub
Better bus service	There's a park
Club	The fate (sic)
Panto	The green
Shop	Small friendly community
Book club	Village hall events
Youth club	Friendly+friends
Reopen wildfowl centre	Lovely people
Turn wildfowl trust into outdoor pursuits centre	In country but close to city
Bird boxes	Small and quiet
Bat boxes (Peakirk has too many)	Village quiz
Footpath/cycleway to Northboro	Has its own identity
Wildfowl trust re instated /parkland (whole or part)	Wildlife
Wildfowl reopening	Small and friendly
Family beer garden at pub	Countryside within easy reach
Park at Glinton end of village	Peaceful and friendly
Performances on green for all ages +picnics	Active and sensible Parish council
Footpath/cyclepath on S bend out of Peakirk twds Northboro	Good space to walk
River with boats and ducks	Village events
Climbing equipment in park like Glinton's	Park pub green
Speed limit observed	Community feel
Peakirk post office	Friendly people

Bus service to be kept	The park
Glass bottle recycling	Countryside,friendly,small
Foot/cycle paths to Northboro+Newboro	Feel good factor
Footpath across railway	Caring community spirit
Open wildfowl to the public	Lovely church
Speed cameras	Small
Reopen wildfowl trust	Close neighbours
Local/village shop	Trees and open landscape
Village shop	Bonfire night
A river with ducks	Able to walk dog in the countryside easily
Darts,pool, golf society	Small
Reopen wildfowl trust	Village events
Traffic calming	Rural,welcoming pub
Delaine bus service	Helpful community
Peakirk sheltered housing complex	Village green
Lists of local tradesmen	Best community
Facebook page for upcoming Peakirk events	Friendliness
Wind turbines	Rural
Village sweet shop	Community spirit
Youth club(teenagers)	Community friendliness
Not many more houses	Community spirit
Less cars along Thorney Rd at peak times	Fantastic village hall
Wind turbines	Friendly, good community
Village shop	Own identity
Proper path along Thorney Rd to join Green wheel(Sissons Farm)	All of the wildlife
Wildfowl trust open again	
Community allotment	
Youth club for teenagers of village	
Need teams of sports eg cricket,darts	
Path along Thorney Rd	
One energy supplier for whole village,lower bills	
Different aged teams	
Community sport teams	
Fish and chip van	
Car sharing	
Green space for sports activities I e cricket team,football team	
No more houses	
Tea +Mozart on village green	
Wildfowl trust open to explore	
Small wind turbines?	
Footpath to Northboro	
Sheltered older peoples housingBat boxes and bird boxes. Think about our wildlife	

Cats,we need to protect our wildlife!	
Recreational ground for lawn bowls/cricket/rugby/football	
Encouraging community spirit-Peakirk teams + exercise	
Grow orchard trees, produce apples,would look nice+could sell on	
Yearly village fete not every 2,do BBQ,not everone wants cakes	
More trees	

POST CARD COMMENTS		
Change one thing	Keep one thing	Other Comments
Bus service mainly for elderly and infirm.Later a train halt	Village is lovely,very friendly,clea n and peaceful	Hope post box remains. Any chance of a community shop if buses stop
A little post office or shop	Safety and quiet	Reopen wildfowl centre
Provide a railway halt	Post box	Befriending telephone number in the village
Open wildfowl centre	Children can walk about safely	Small post office
Less traffic	Friendly community village atmosphere	
Closure of wildfowl trust	The size	
To slow the traffic	Peace and quiet	Speed cameras
		Make more of a feature of the Glington end of the village
Reopen wildfowl trust	The number of houses +in keeping buildings	
Utilise wildfowl trust grounds(an area for residents picnics,fete)	The character of the village, so new developments would be in keeping	
Railway station in Foxcovert Rd	Separated from city and Glington keeping its rural character	Footpath/cycle route to Newborough on Thorney Rd
	Wha remains of rural character	It is a small rural village and not a suburb of P'boro. I hope it retains its character
Traffic too fast at perak times	Size, limited development, infil only	More open space,take pressure off village greenfor Glington end.Railway stop.Better connection with city,improved broadband

To have more back streets speed bumps	The village green	Have a village xmas tree on the monument. More equipment at park
Village green	Allotments	Youth club and train station
More paths	To know lots of people	

OTHER COMMENTS (3 Respondents)		
<p>Maintenance of the tranquil rural image</p> <p>Affordable housing (for young buyers)</p> <p>Housing for the elderly.</p> <p>Increased housing through infill rather than extending the village envelope</p> <p>Develop a criteria to judge planning applications against.</p> <p>More open/recreational space (church field?)</p> <p>Additional burial space</p> <p>Greater celebration/support/promotion of our heritage, especially the church</p> <p>Reduce speeding through the village by traffic calming measures</p> <p>Lobby BT for high speed Broadband</p> <p>Improved sewage/waste water disposal (to eradicate the constant smell and pumping station problems)</p> <p>Maintenance of a public transport service</p> <p>A tree planting programme to enhance the rural and visual landscape, also to anticipate ash die- back</p> <p>Promote 'green 'policies but not to the detriment of the visual landscape</p>		
<p>Protect size and character of the village and enhance the central conservation area. Protect views in and out of the village. Offer small scale individual development plots to extend range of housing options. Control traffic speeds, safety on roads, cutting down on car journeys. Linking Meadow Rd and Foxcovert to main villager. Support home working with super fast broadband and home/work units or start up workshops. Look at grave yard provision. Sustainable transport options, railway station, safer cycle links to Deeping. Support our pub and extending retail options. Extend range of protected green space and casual use, linking it around the village. Look at options for renewable energy on a community owned basis.</p>		
<p>Changes to Village. Like to see park benches on village green. Control on speeding vehicles using village as a rat run. Something to give locals reason to walk through the village to enjoy it and meet.</p> <p>What to keep in the Village. Village hall, villager green, development in the village. It will happen but needs to give the opportunity to live and stay within the village. Senior people to have a housing choice providing more suitable homes for their needs so they can stay in the village. Young single units to allow growing children the chance to stay living in the village. Social homes for those who cannot afford to buy a house in the village. Starter homes for those who can. Business area to give opportunity for local people to create jobs or start a business. Green development breaks to lessen impact on the village and those affected by the building of new homes.</p>		